

Rewritable Technology

cards[®]
& more

... for smart solutions

Information that changes

CX-one

The CX-one printing and erasing system is the result of expertise acquired over many years in reprint and smart card technology - the perfect solution for your card application.

Using a special technology, plastic cards which have a thermo rewrite (TRW) surface can be personalized graphically.

No color ribbons are needed for this monochrome printing method.

Up to 500 times, the TRW surface of a card can be erased and personalized again.

The same unit can be used for standard thermal paper tickets.

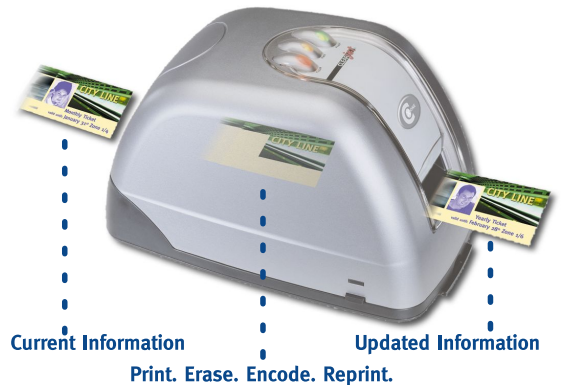
The perfect solution for example to have a multiple use for a high quality smart card, or to be able to update a card optically, or to apply attractive visual information for a card holder.

You can simply alternate between paper day tickets and PVC annual passes.

There are different CX-one models available: CX-one with 200 or 300 dpi, both with or without hopper and the CX-one OEM for integration into customer specific solutions - also available with an industrial stacker.

All these models can be delivered with integrated read/ write devices for contact or contactless chipcards, magstripe or barcode modules.

CX-one - the perfect solution for your card application.



The Clearjet-Rewrite-Printers

Technical Specifications



CX-one



CX-one with hopper



CX-one OEM



CP2-classic

CX-one

General Specifications

- Top-quality printing, erasing and reprinting of smart cards with thermo-rewrite surface
- Printed card information can be updated 500 times per card in average
- Monochrome, greyscale full graphic print
- Automatic self-cleaning mode
- Windows drivers for 95/ 98, NT, 2000, XP
- 300 x 600 dpi or 200 x 600 dpi
- 3 different resident fonts
- True type fonts available via Windows driver
- Graphics mode/ text mode

Dimensions	CX-one	CX-one Hopper
• Max. length:	295 mm	346 mm
• Max. width:	170 mm	170 mm
• Max. height:	190 mm	190 mm
• Length card collector:	90 mm	90 mm
• Weight:	approx. 3 kg	approx. 3 kg

Communication Interface

- The CX-one printer mechanism can be controlled either via serial (9600 baud, 38400 baud or 57600 baud, switchable) or USB (full speed 10 Mbaud) interface. A serial interface is available for connection to a card read/ write device

Environmental

- Operating Temperature: +15°C to +35°C, Storage Temperature: 0°C to +50°C

Electrical

- 115 V AC or 230 V AC, 60 +/- 3 Hz or 50 +/- 3 Hz, max. 2 A or 1.1 A

Card Specifications

- ISO 7810 cards (blank, magstripe, contact or contactless chipcards) with a thermorewrite surface
- Reprintable PET cards
- Thermal paper tickets

Encoding modules

- Magnetic encoder, Contact chip encoder, Contactless chip encoder, Barcode reader

CP2-classic

General Specifications

- Top-quality printing, erasing and reprinting of smart cards with thermo-rewrite surface
- Printed card information can be updated 500 times per card in average
- Monochrome print
- Windows drivers for 95/98, NT, 2000, XP
- 200 x 600 dpi
- 3 resident fonts
- True type fonts available via Windows driver

Dimensions

- 140 x 218 x 319 mm (w x h x l), Weight: 5.5 kg

Communication Interface

- The CP2-classic printer mechanism can be controlled either via parallel or serial interface

Environmental

Temperature: 15°C to 35°C

Relative humidity: 20% to 80% (no condensation)

Electrical

- Power source: 90 - 240 V AC 50/ 60 Hz, Power consumption: max. 150 VA

Card Specifications

- ISO 7810 cards (blank, magstripe, contact or contactless chipcards) with a thermorewrite surface
- Reprintable PET cards
- Thermal paper tickets

Encoding modules

- Magnetic encoder, Contact chip encoder, Contactless chip encoder, Barcode reader