

# Printer Smart Card Kit

**cards<sup>®</sup>**  
**& more**

... for smart solutions

## Smartcard Reader / Writer for Card Printers

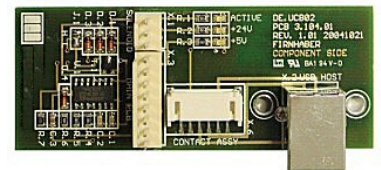
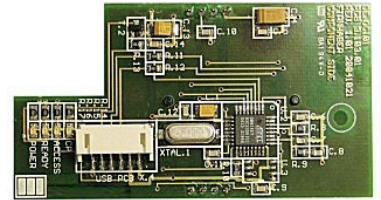
The Smart Card Kit has been designed for upgrading card printers with chip card capabilities. Reading from and writing to the SmartCards can be done before printing.

The controller PCB is powered by an ATMEL MPU with an OMNIKEY operating system (CardMan<sup>®</sup> Smart@Link). The physical connection between the controller and the host computer follows the USB standard. The controller is designed to meet all major standards like PC/SC, ISO 7816, GSM 11.11, Home Banking Computer Interface (HBCI), the PC-99 Specification and many more.

The PCBs are equipped with onboard diagnostic LEDs for operation status.

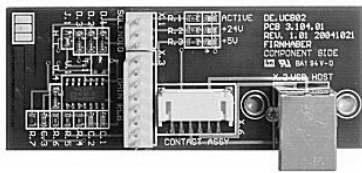
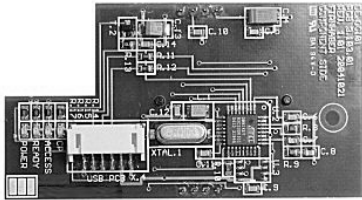
The kit comes with all components required to upgrade the printers:

- Contact Assy with controller
- USB Interface PCB
- Solenoid Kit
- Cable Set
- Installation Manual
- Driver CD PC/SCTest Application for Memory Chips



**Printer Smart Card Kit**

# Technical Specifications



Smart Card	Compliant with ISO 7816 and EMV 2000	
Interface	supports 5V, 3V and 1,8V smart cards	
Power Supply	current 60 mA to power the smart card Smart card movement detection with auto power-off Automatic detection of smart card type Short circuit and thermal protection 8 pin handling (C4/C8 supported)	
supported Protocols	T=0, T=1 I <sup>2</sup> C (S=8) 2-wire: SLE4432/SLE4442 (S=10) 3-wire: SLE4418/SLE4428 (S=9)	
Performance	up to 119 Kbps when supported by card	
Host Interface	USB 1.1 + USB 2.0 CCID Support 12 Mbps Transmission Speed Customer specific USB-descriptors possible	
Compliance	WHQL (Microsoft) certified EMV 2000 (Europay, Mastercard, Visa) certified USB 1.1, USB 2.0 and USB CCID ISO 7816 HBCI	
Power supply	USB	
Status Indicator	Controller PCB	Power LED Ready LED Card Present LED Activity LED
	USB Interface PCB	Power LED +24V Power LED +5V Solenoid Active LED
Operating Systems	Windows 98 Windows ME Windows 2000 Windows XP Windows CE 3.0 / CE.NET depending on Hardware Windows NT 4.0 (on request) Linux MacOS X	
Drivers	PC/SC, CT-API, I2C Bus- API	

