

# RELEASE INFORMATION

## NFIVE IMAGER COMPATIBLE CANON CAMERAS

PowerShot A620,  
7.1 million effective pixels  
7.1 million sensor photo detectors  
35 mm - 140 mm (4x) zoom lens



PowerShot S80,  
7.1 million effective pixels  
7.1 million sensor photo detectors  
28 mm - 100 mm (3.5x) zoom lens



PowerShot S3 IS  
6.0 million effective pixels  
6.2 million sensor photo detectors  
36 mm - 432 mm (12x) zoom lens



PowerShot G7  
10.0 million effective pixels  
10.3 million sensor photo detectors  
35 mm - 210 mm (6x) zoom lens



PowerShot A640  
10.0 million effective pixels  
10.3 million sensor photo detectors  
35 mm - 140 mm (4x) zoom lens



PowerShot S5 IS  
8.0 million effective pixels  
8.2 million sensor photo detectors  
36 mm - 432 mm (12x) zoom lens



Purchase cameras from your local photo store. Camera drivers not included in NFive's applications.

## THE NEW IMAGER 1.2



cardfive



accessfive

The ultimate Nfive tool for identification photo acquisition that includes Canon direct interface for crisper, high definition images in any environment.



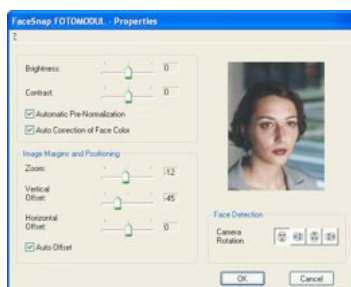
*The Imager, a software free-of-charge plug-in supplied with NFive applications sets a new standard in photo acquisition and processing. Compatible with any PC based video acquisition systems it also includes now Canon SDK interfacing, taking advantage of the digital cameras superior quality and convenience over conventional PC systems.*

### Capture images from all sources

The Imager allows you to capture and quickly edit pictures or logos from any source: File, Paste, Scan, Video, Camera memory cards or directly from Canon Cameras.

### Fine tune your images with fewer clicks

It captures single shots or series on 9 shots so you can choose the best shot with one click operation. Allows you to crop in a very intuitive interface, choose among color variations, fine tune sharpness, color temperature among others.



### Intelligent Face cropping and normalization.

The optional FaceSnap extra plug-in, automatically crops faces, based on artificial intelligence algorithms with no human intervention. A "must-buy" if you intend to capture large volumes of identification photos.

